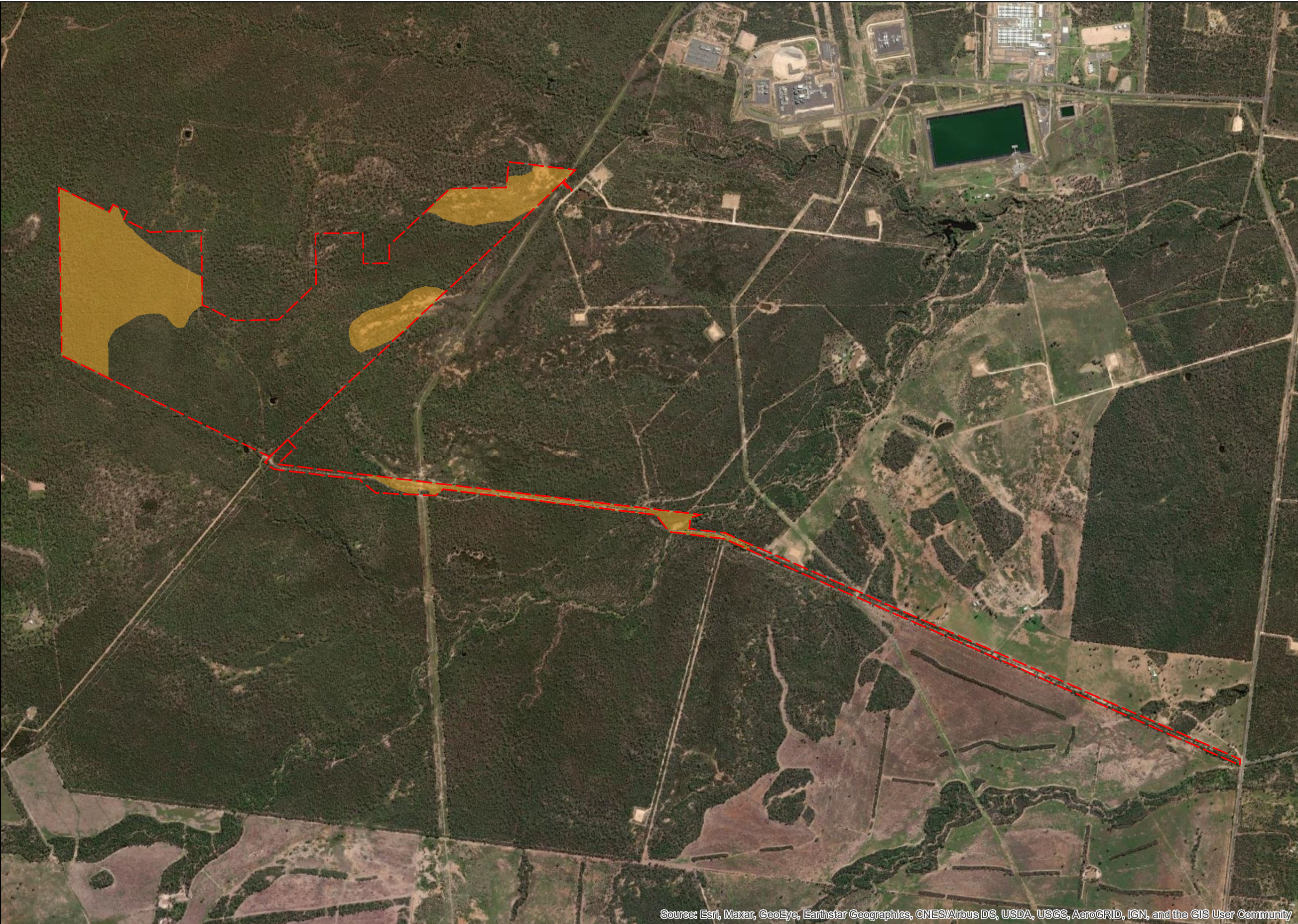


Appendix L Habitat Mapping

Figure 1: Habitat Map - Yakka Skink



Legend

- Project Extent
- Yakka Skink - Habitat (76.2ha)

N
▲

0 105210 420 630 840 1,050
m

Coordinate System: GDA 1994 MGA Zone 56
Projection: Transverse Mercator

Source: Esri, Maxar, GeoEye, Earthstar Geographics, CNES/Airbus DS, USDA, USGS, AeroGRID, IGN, and the GIS User Community



Issue	Date	Description	Drawn	Checked
A	14/06/2023	Preliminary	AL	AH

Kumbarilla Renewable Energy Park

Date: 14/06/2023
Figure 1 YSkink habitat Kumbarilla A

Figure 2: Habitat Map - Five-clawed Worm-skink



Legend

- Project Extent
- Five-clawed Worm-skink - Habitat (2.5ha)

N
▲

0 105210 420 630 840 1,050
m

Coordinate System: GDA 1994 MGA Zone 56
Projection: Transverse Mercator

Source: Esri, Maxar, GeoEye, Earthstar Geographics, CNES/Airbus DS, USDA, USGS, AeroGRID, IGN, and the GIS User Community

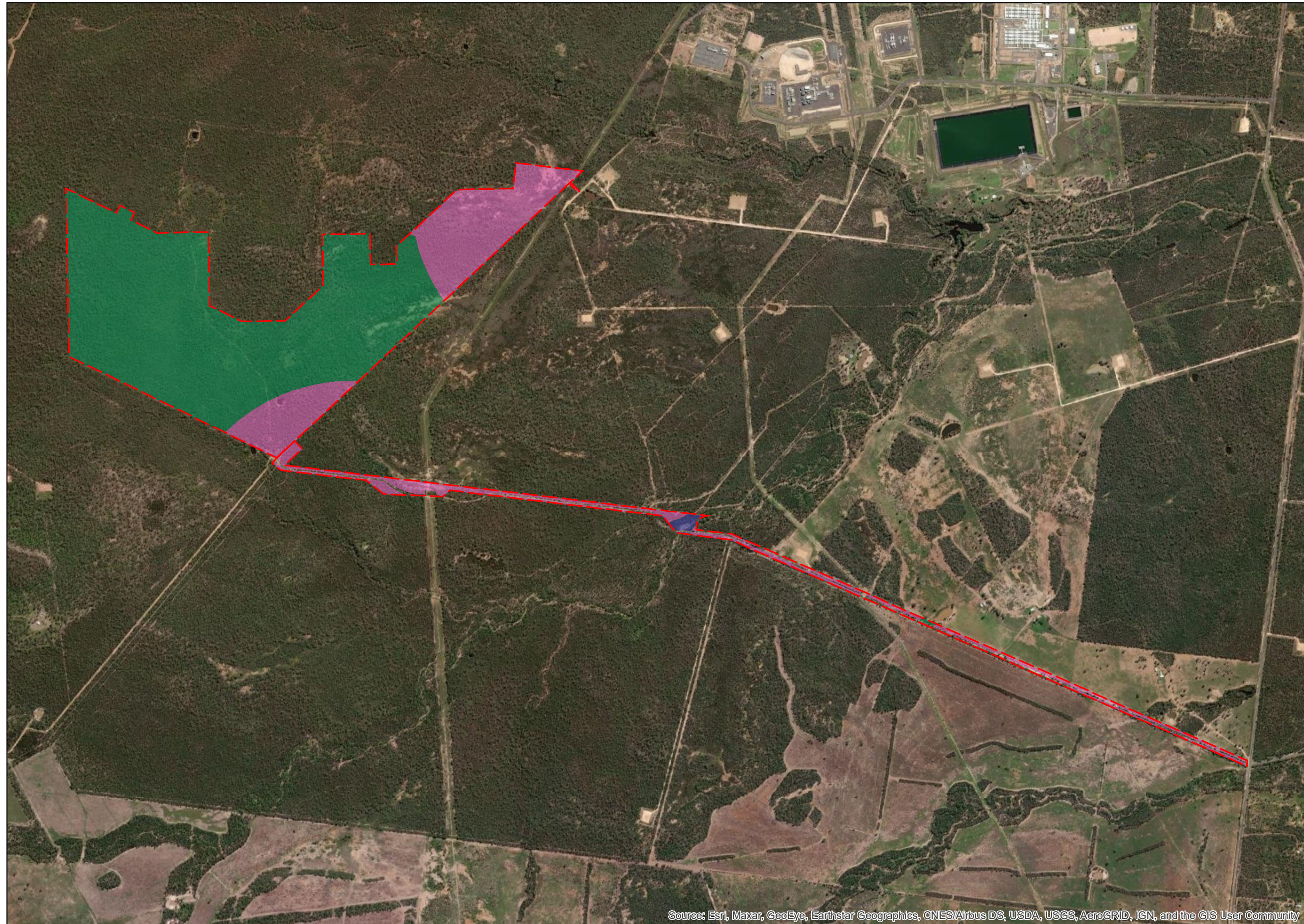


Issue	Date	Description	Drawn	Checked
A	14/06/2023	Preliminary	AL	AH

Kumbarilla Renewable Energy Park

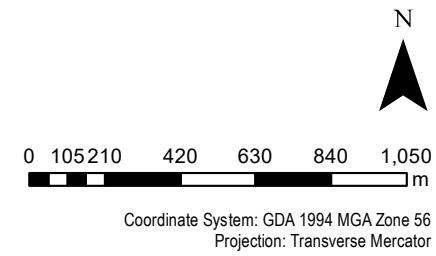
Date: 14/06/2023
Fig 2 FCWSkink habitat Kumbarilla A

Figure 3: Habitat Map - Squatter Pigeon



Legend

- Project Extent
- Squatter Pigeon - Breeding habitat (59ha)
- Squatter Pigeon - Foraging habitat (147ha)
- Squatter Pigeon - Dispersal habitat (1.22ha)



Source: Esri, Maxar, GeoEye, Earthstar Geographics, CNES/Airbus DS, USDA, USGS, AeroGRID, IGN, and the GIS User Community



Issue	Date	Description	Drawn	Checked
A	14/06/2023	Preliminary	AL	AH

Kumbarilla Renewable Energy Park

Date: 14/06/2023
Fig 3 SPigeon habitat Kumbarilla A

Figure 4: Habitat Map - Painted Honeyeater



Legend

- Project Extent
- Painted Honeyeater - Habitat (11.3ha)

N
▲

0 105210 420 630 840 1,050
m

Coordinate System: GDA 1994 MGA Zone 56
Projection: Transverse Mercator

Source: Esri, Maxar, GeoEye, Earthstar Geographics, CNES/Airbus DS, USDA, USGS, AeroGRID, IGN, and the GIS User Community

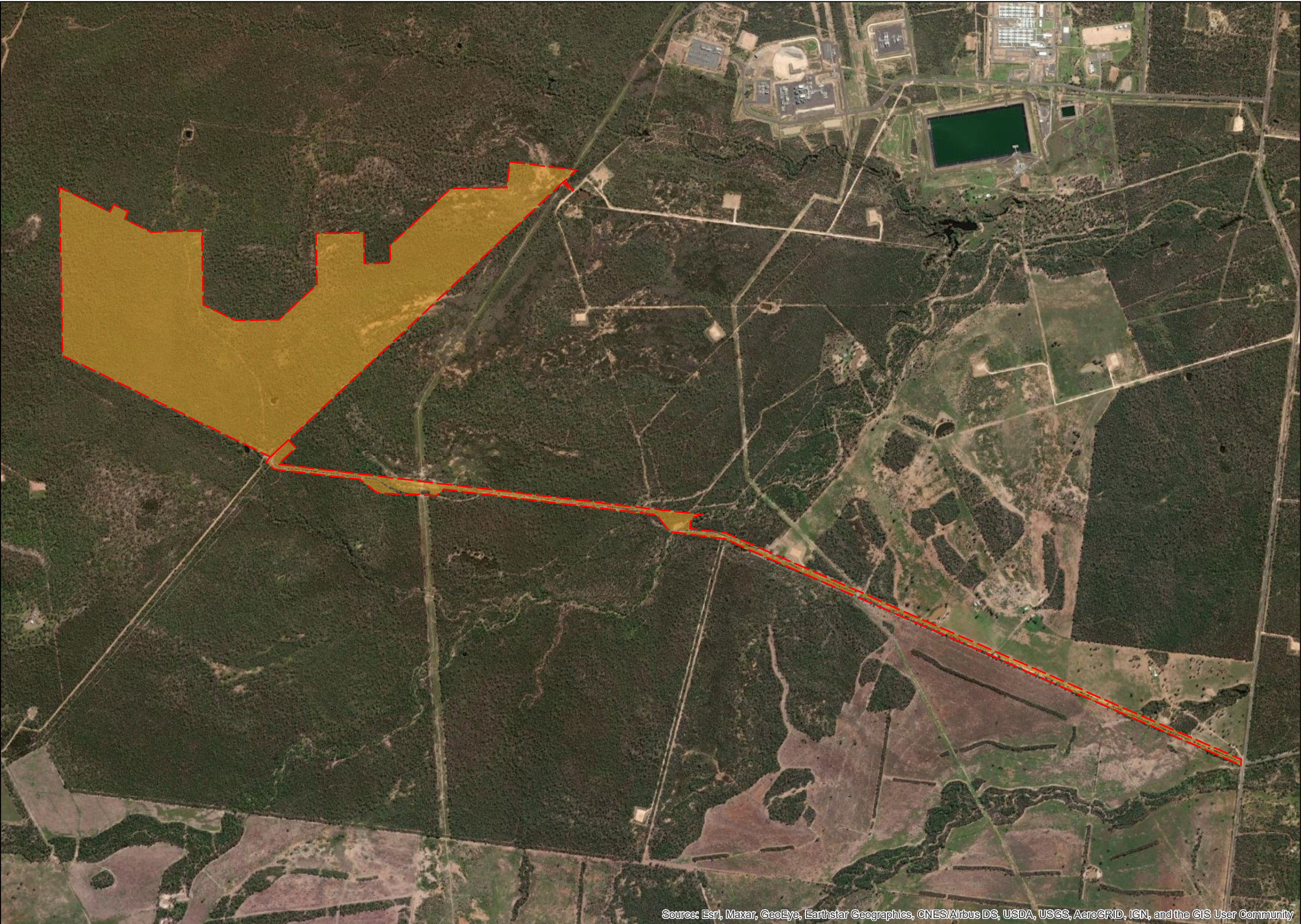


Issue	Date	Description	Drawn	Checked
A	14/06/2023	Preliminary	AL	AH

Kumbarilla Renewable Energy Park

Date: 14/06/2023
Fig 4 PHoneyeater habitat Kumbarilla A

Figure 5: Habitat Map - White Throated Needletail



Legend

- Project Extent
- White-throated Needletail - Habitat (207.5ha)

N
▲

0 105210 420 630 840 1,050
m

Coordinate System: GDA 1994 MGA Zone 56
Projection: Transverse Mercator

Source: Esri, Maxar, GeoEye, Earthstar Geographics, CNES/Airbus DS, USDA, USGS, AeroGRID, IGN, and the GIS User Community

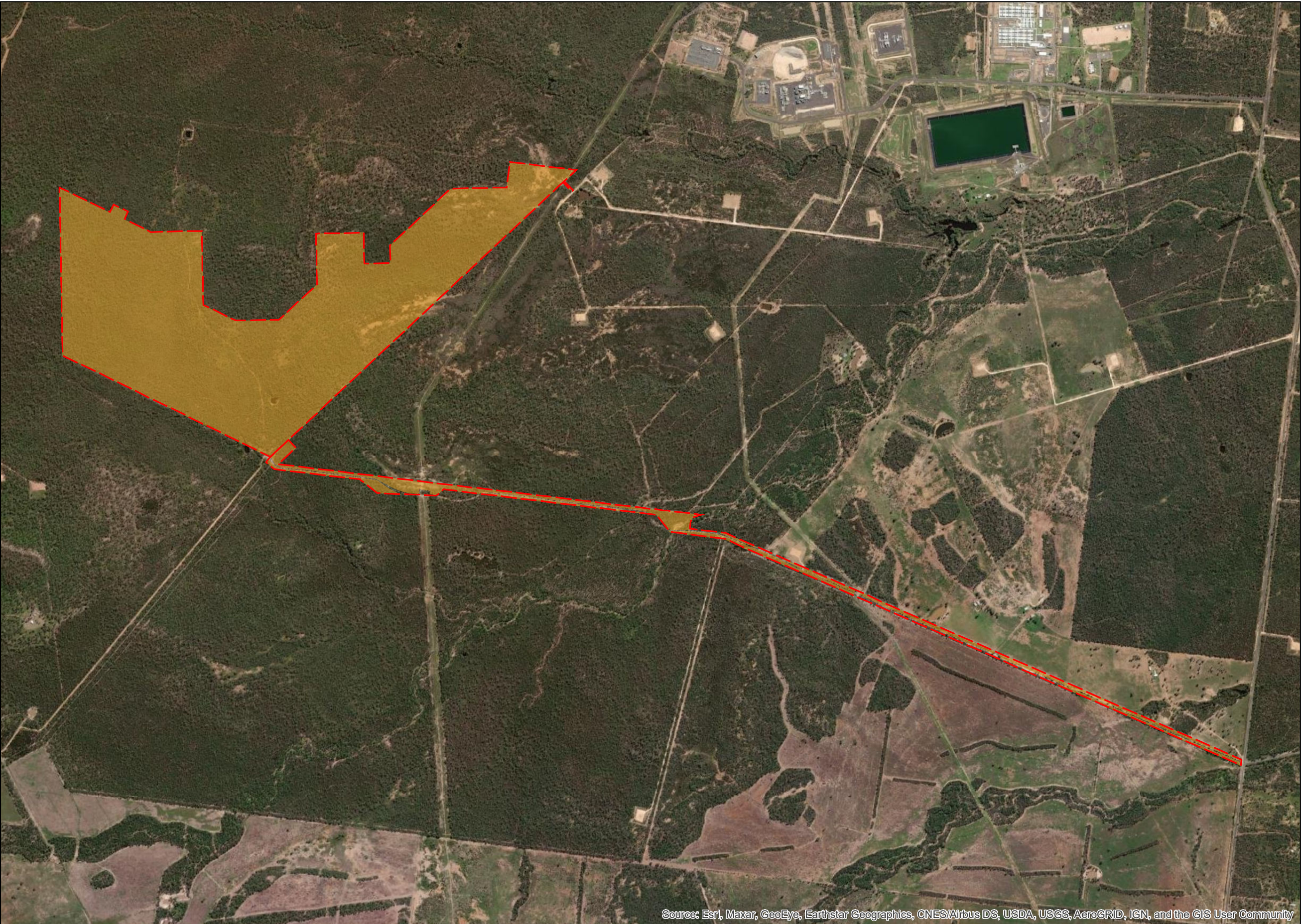


Issue	Date	Description	Drawn	Checked
A	14/06/2023	Preliminary	AL	AH

Kumbarilla Renewable Energy Park

Date: 14/06/2023
Fig 5 WTNeedletail habitat Kumbarilla A

Figure 6: Habitat Map - Koala



Legend

- Project Extent
- Koala - Habitat (207.5ha)

N
▲

0 105210 420 630 840 1,050
m

Coordinate System: GDA 1994 MGA Zone 56
Projection: Transverse Mercator

Source: Esri, Maxar, GeoEye, Earthstar Geographics, CNES/Airbus DS, USDA, USGS, AeroGRID, IGN, and the GIS User Community



Issue	Date	Description	Drawn	Checked
A	14/06/2023	Preliminary	AL	AH

Kumbarilla Renewable Energy Park

Date: 14/06/2023
Fig 6 Koala habitat Kumbarilla A

Figure 7: Habitat Map - Brigalow Woodland Snail



Legend

- Project Extent
- Brigalow Woodland Snail - Habitat (2.5ha)



0 105210 420 630 840 1,050
m

Coordinate System: GDA 1994 MGA Zone 56
Projection: Transverse Mercator

Source: Esri, Maxar, GeoEye, Earthstar Geographics, CNES/Airbus DS, USDA, USGS, AeroGRID, IGN, and the GIS User Community



Issue	Date	Description	Drawn	Checked
A	14/06/2023	Preliminary	AL	AH

Kumbarilla Renewable Energy Park

Date: 14/06/2023

Fig 7 BWLSnail habitat Kumbarilla A